



USER MANUAL

MARCH 2024

BLDC  
FAN

SAVES  
ELECTRICITY

LOW  
NOISE

HIGH  
AIRFLOW



**2** YEARS  
WARRANTY

# Kühl EXZEL H1

BLDC Desert Cooler

# Welcome to Kühl

Dear Customer,

Thank you for choosing Kühl Stylish Fans. Our Next-Gen Desert Coolers offer high speed fast cooling with low noise and our cutting-edge BLDC technology gives you the satisfaction of low electricity bills.

We prioritize customer satisfaction, ensuring each Kühl Stylish fan undergoes rigorous testing across all aspects of its operation, effectiveness, and efficiency. Our comprehensive testing procedures evaluate its performance under diverse working conditions, guaranteeing a product that exceeds expectations.

Kühl Exzel H1 Next-Gen Desert Cooler enhances the experience of a desert cooler with BLDC technology and a low noise function. It comes with ultrasonic mist humidifiers that ensure a fine mist without any water droplets, offering a more efficient and clean way to maintain optimal humidity levels. With ample water tank capacity and remote functioning, it elevates your convenience and alleviates any need for constant tank refilling. Reimagine your desert cooler experience with unparalleled performance and comfort with Kühl Exzel H1.

Thank you!

# TABLE OF CONTENTS

1. Introduction .....	4
2. Features of Kühl Exzel H1 BLDC Desert Cooler.....	4-5
3. Items in the Box .....	5
4. Assembly Instructions .....	6-7
5. Know your Fan Operation .....	8
6. Know your Remote Control Device.....	9-11
7. Cleaning and Maintenance .....	12

## INTRODUCTION

Enhance your living space with the Kuhl Exzel H1 Next-gen Desert Cooler . Featuring an advanced BLDC motor and ultrasonic mist humidifier, this remote-controlled fan offers impressive energy efficiency and quiet operation. Its modern design adds a touch of sophistication to any home, while the ultrasonic mist humidifier technology prevents water droplets. With a spacious water tank, these coolers reduce the need for frequent refills. Enjoy added convenience with features like a digital speed display, ensuring a comfortable and refreshing atmosphere with every use.

## FEATURES OF YOUR KÜHL EXZEL H1 NEXT-GEN DESERT COOLER

- **BLDC Technology for energy saving:** Kuhl Stylish Fans offer better speed versus torque characteristics. It ensures high dynamic response and efficiency. Thanks to its lack of electrical and friction losses, it offers long operating life and ensures one more step towards building a sustainable future.
- **Mist Humidifier:** Revel in the refreshing breeze with the Kuhl Exzel H1 Next-gen Desert Cooler's mist humidifier technology with no water droplet. This cutting-edge feature ensures a fine mist for optimal humidity without the inconvenience of water droplets.
- **Water Storage:** Kuhl Exzel H1 sports a generous storage capacity of 2.2 liters that lasts for up to 8 hours, ensuring uninterrupted cooling performance and allowing you to relax and enjoy the refreshing breeze without the need for frequent attention.
- **Digital Display of Speed & Mist:** The Kuhl Exzel H1Next-gen Desert Cooler redefines ease of use with its Digital Display of Speed & Mist. This intuitive feature allows for the precise monitoring of fan speed and mist output, all visible through changes made via the remote controller.
- **Highest Air Delivery:** Energy efficient operation with around 60 W Power, 400 mm Sweep, and high RPM Speed to fill every corner of your place with fresh air as per your need. Its higher air force ensures unmatched comfort in every corner of the place.

- **Low Noise:** A low noise operation without compromising the speed limit is one of the most desired features of Kühl Stylish Fans. They operate at low speeds while providing high airflow with low turbulence and minimal wind noise.
- **Remote Operated:** Kühl Exzel H1 Next-gen Desert Cooler is remote operated, conveniently adjust the fan speed, set timer, swing, or sleep mode.
- **Oscillation:** The Kühl Exzel H1 features dynamic swiveling capabilities, effortlessly dispersing air to every corner of your space. It's smooth side-to-side motion ensures comprehensive airflow coverage, optimizing comfort throughout the room.
- **Attractive Design:** Stylish enough to enhance the look of your place, Kühl Stylish Fans feature decorative trims and a sleek surface that become the center of attention in any space.

SPECIFICATION	Kühl Exzel H1 Next-gen Desert Cooler
<b>Power (Watt)</b>	<b>60</b>
<b>Sweep (mm)</b>	<b>400</b>
<b>Air Delivery</b>	<b>77</b>
<b>Speed in RPM at 5th position</b>	<b>1200</b>

## ITEMS IN THE BOX

<b>Fan Body</b>	<b>1 N</b>	
<b>Base</b>	<b>1 N</b>	
<b>Base Cover</b>	<b>1 N</b>	
<b>Support Tube</b>	<b>1 N</b>	
<b>Wheels</b>	<b>5 N</b>	
<b>Fan Remote</b>	<b>1 N</b>	

# GETTING STARTED

## Before using the mist fan for the first time:

- Carefully unpack the desert cooler and remove all the packing materials.
- Please check for all the parts to assemble the desert cooler properly [See Image 1]
- Use a soft cloth to clean dust on the surface that may happen during packing or transportation.
- Place the desert cooler on a flat and stable surface.

## ASSEMBLY INSTRUCTIONS

- See Image 1, Cover the metal rod of the 5 wheels [7] with the 5 black plastic sleeves and insert them in the holes under the base [5].
- Put the base cover [4] onto the support tube [3], put the support tube [3] onto the base [5] and fix it with the screw [6].
- Connect the fan body [1] to the support tube [3] and finally fasten them with the screw [2].

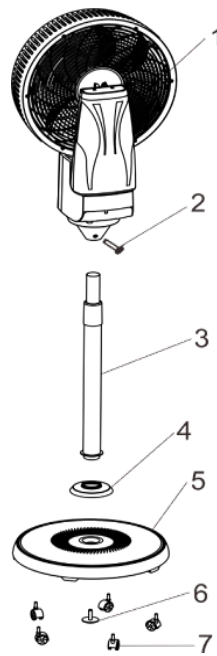


IMAGE 1

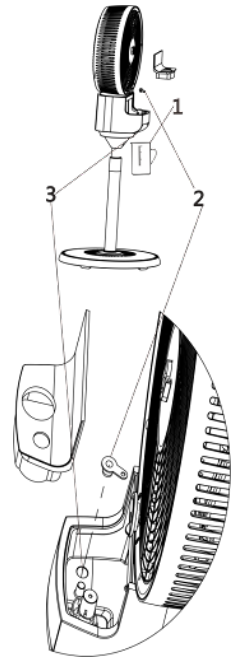


IMAGE 2

## FILLING THE WATER TANK

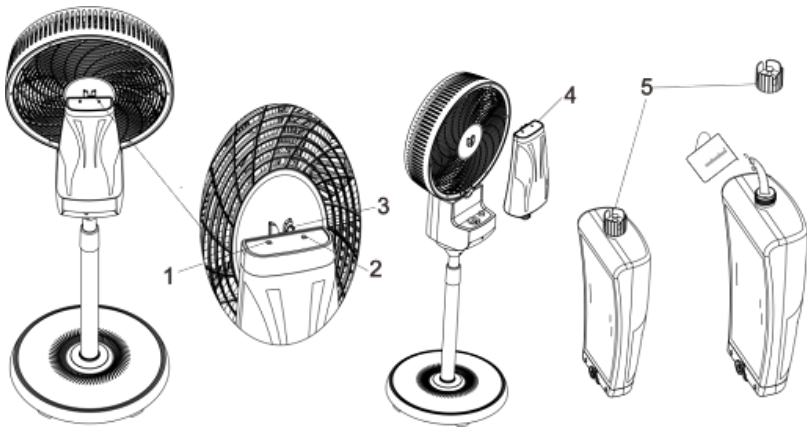


IMAGE 3

- See Image 3, Turn the tank lock (3) to the on-lock position (2) take off the water tank (4) from the fan body, and unscrew the lid (5) of the water tank.
- Fill the tank with cold and clean water, making sure not to overfill it.
- Put the water tank back on the back of the fan body, ensuring it is appropriately seated in the recess.
- Turn the tank lock (3) to the off-lock position (1) to secure the tank.

## ATTENTION!

- Ensure the product is unplugged from the mains before filling or refilling the water tank.
- Only use water in the water tank. Do not add any chemicals, oils, or other additives.
- The water must not be warmer than 50°C.

## OPERATION ON THE FAN

When connected to the power supply, the fan is under standby mode. It can be controlled with the control buttons or remote.

## OPERATION INSTRUCTIONS

### INDICATOR LIGHTS:

- 1 OSC
- 2 Timer- 0.5H/1H/2H/4H
- 3 Speed-(1,2,3) Low -(4,5,6) Medium-(7,8,9) High
- 4 Remote control signal receiving
- 5 Mist Max
- 6 Mist Medium
- 7 Mist Minimum
- 8 Mode Normal
- 9 Mode Natural
- 10 Mode Sleep

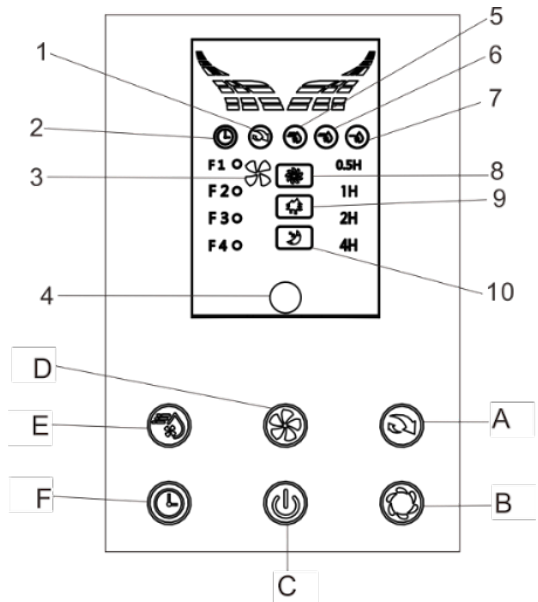


IMAGE 4

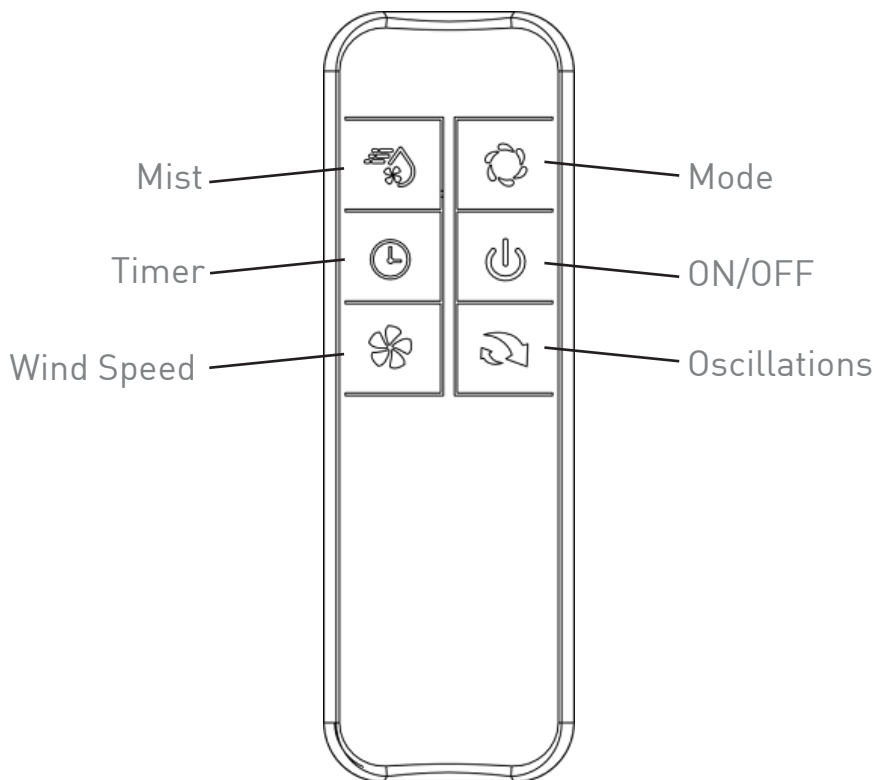
### CONTROL BUTTONS:

- |        |              |         |
|--------|--------------|---------|
| A OSC  | C ON/OFF     | E Mist  |
| B Mode | D Wind Speed | F Timer |

## REMOTE CONTROL

The above functions can be controlled using the remote control by pressing the corresponding function buttons.

To use the remote control, insert two AAA 1.5V batteries in the battery housing in the remote.

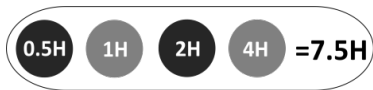


## 1: MIST BUTTON

- Press the “Mist” button to switch the ultrasonic mist on or off. Adjust the mist volume (Max-Medium-Minimum) by pressing the “Mist” button several times.
- When the mist function is selected, the corresponding mist volume indicator light will be illuminated.
- If the water tank is empty (or short of water), the 3 mist indicator lights will flash continuously at the same time.
- The mist function and fan function can be worked independently or together.

## 2: TIMER BUTTON

Press the “Timer” button when the fan is on. The indicator will show the time remaining until the fan is due to switch off. You can select the length of time the fan will be in operation from spans ranging from 0.5 to 7.5 hours in 0.5-hour increments. Press the TIMER button repeatedly, and the sum of the values of the lights is the remaining time until shuts down.



## 3: WIND SPEED BUTTON

- Press the Power “ON/OFF” button to switch the fan ON.
- Set the fan speed from 9 options (1,2,3) Low speed-(4,5,6) Medium speed-(7,8,9) High speed by pressing the “WIND SPEED” button several times. The LED light will show low speed, medium speed, and high speed correspondingly.

## 4: MODE BUTTON

- The wind mode can be adjusted by pressing the “MODE” button.
- **Normal:** The fan will operate in High, Medium, or Low mode as set.
- **Natural:** The fan will operate at low, medium, and high speeds in different patterns to provide a wind flow that replicates natural airflow.
- **Sleep:** Sleep mode can operate at low, medium and high speeds. In sleep mode, the wind speed will decrease in set patterns before operating at a low speed until shut down.

## 5: ON/OFF BUTTON

- Press the “ON/OFF” button to switch the fan on or off.
- Every 72 hours, the control panel lights flash to indicate that the water tank needs to be cleaned. Press the “ON/OFF” button 5 seconds to reset.

## 6: OSCILLATING BUTTON

When you press the “OSC” button, the mist fan head will move continuously from side to side. Pressing the button again will stop the oscillation of the mist fan.

## CLEANING AND MAINTENANCE

- Always unplug the fan before cleaning it.
- Clean the water tank and water every 72 hours to prevent the formation of scale, algae, or bacteria.
- If you do not intend to use the fan for an extended period, empty the water tank and dry the water unit with a microfiber cloth.
- See Image 2, put a container (1) at the drain to catch the water that comes out. pulling out the rubber stopper (2) from the drain outlet (3) to drain the water from the humidifier base.
- If the fan is placed in storage for a more extended period of time (over winter, etc.), keep it safe and away from dust or damage.
- To avoid damaging the plastic and indicators, do not use any abrasive cleaning agents or chemicals.
- The fan must not be opened by unauthorized persons.

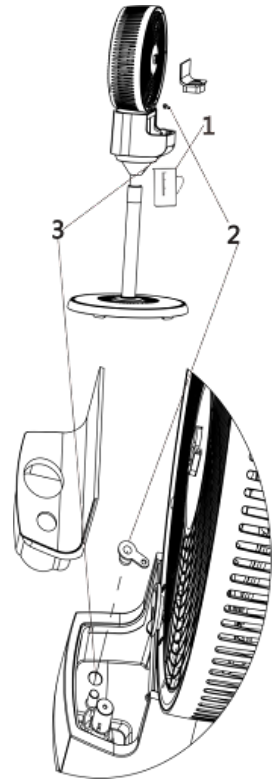


IMAGE 2

**CAUTION:** Unplug the fan from the electrical supply source before cleaning. After servicing, any safety device (including grilles and blades) must be reinstalled or remounted as previously installed. Use a soft damp cloth then wipe with a dry cloth. Do not use harmful detergents. Do not bend the blades.



CONTACT US AT:

E-6,7 & 8, Sector-59, Noida, U.P.-201 309, India. Call: 92-789-12345

E-mail: [service@kuhl.in](mailto:service@kuhl.in) or visit us at [www.kuhl.in](http://www.kuhl.in)

\*T&C Apply. This warranty is only applicable to the products sold in India.